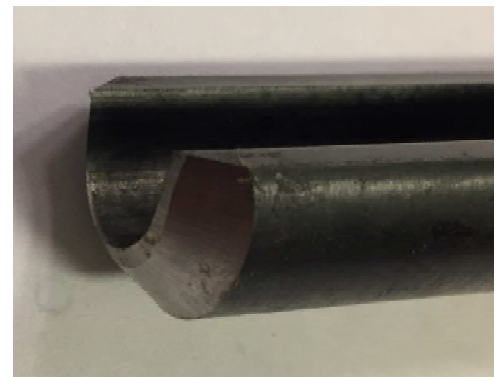
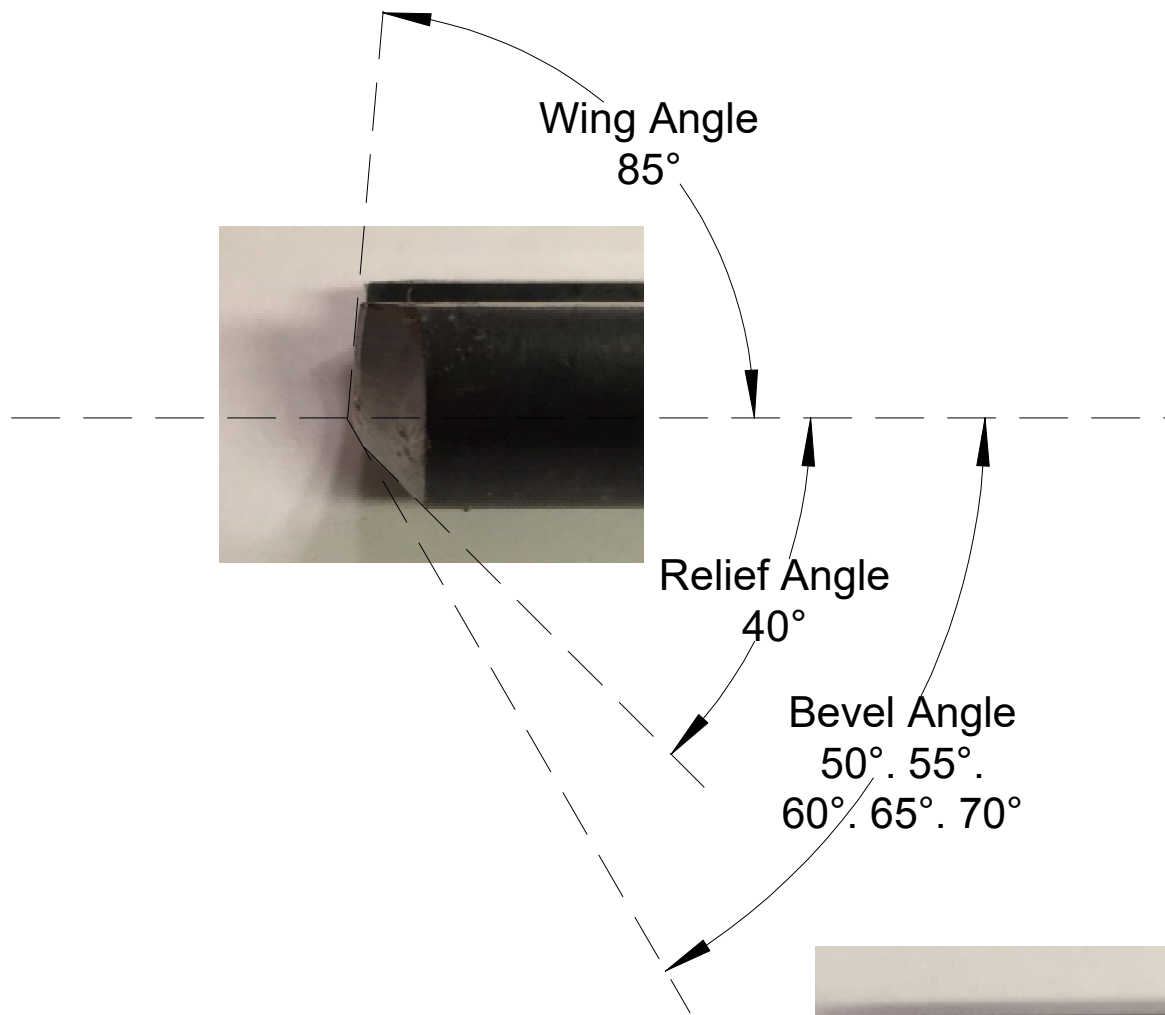


# 85°/60° Grind for 5/8"Ø & 3/4"Ø Thompson Deep U Gouge



## Notes:

Relief angle should be round the whole bevel length

50° For plater faces, shallow bowl & square platers

55° For most bowl sizes

60° For deeper bowls - 65° to 70° is the highest working angles and only suitable for very deep narrow bowls